



Newsletter - Winter 2004 Edition

Greetings,

The entire Groupe CADEC team is proud to present this inaugural edition of the **CADEC AGRIFOOD** newsletter. Our intent is to regularly keep you up-to-date on our services and new developments with issues four times a year.

The Group CADEC has been a solutions company focused on processes for more than 15 years. We continue to grow and employ more than 55 people in three branches located in Montreal , Quebec City, and Sherbrooke .

Our team comprises engineers and technicians in the areas of automation, processes, industrial computers, and

instrumentation. Our agrifood team carries out projects mainly in the following sectors:

- Bakeries and cookie factories
- Dairies and cheese factories
- Juice, yogurt, and beer plants

You can find out more about our services by visiting our Web site at:

<http://www.cadecagri-food.com/>

In This Issue

- [GROUPE CADEC has moved](#)
- [GC-Pasto: Practical Solutions...](#)
- [Production Management: GROUPE CADEC Harmonizes Installations](#)
- [Looking for a Palletization Solution?](#)
- [Hands-on Attitude](#)
- [Upcoming...](#)

Winter 2004 News

Groupe CADEC Has Moved!

Given the space required to carry out large-scale projects such as the integration of robot cells and palletizers, we decided to relocate our head office to more spacious facilities in Sherbrooke . As a result, we have increased our floor space

from 4,000 ft² to nearly 10,500 ft²! [Click here](#) for our new address.

GC-Pasto: Practical, Proven Solutions

Group CADEC offers you an extensive range of practical, proven solutions to meet your pasteurization needs. Our systems offer the flexibility and stability sought after in operations and functionality.

Furthermore, our solutions will meet your expectations and can be adapted to your type of production. We currently offer solutions for **thermization, HTST pasteurization, and batch pasteurization** . Current applications apply to juice, milk, cream, whey, and beer.

Intending to replace your pasteurizer's legally approved system?

In order to respond to our customers' needs, we have even developed a totally new, independent legally approved system that enables us to replace the outmoded system on older HTST pasteurizers with a PLC panel that is quite affordable and easy to install.

Newsletter - Winter 2004 Edition Furthermore, our systems comply with the standards established by the **Canadian Food Inspection Agency (CFIA)**.



Production Management: GROUPE CADEC Harmonizes Installations!

Management of production data and parameters is a major component in any solution.

Harmonie software has been designed specifically for batch production systems in the food industry.

Each module of the software plays a specific role in bridging the gap between the manufacturing management system and the production floor.

The Harmonie system is based on an open architecture

and recognized, proven technologies (RSSQL software from Rockwell Software for transactions) that allow easy integration with all systems, including manufacturing management systems running from the most common to the most sophisticated.

Harmonie system components use Microsoft MSSQL databases with no proprietary encryption method.

The Harmonie system offers the following main functionalities:



Parameters Management Module

The GC-PARAM parameters management module provides:

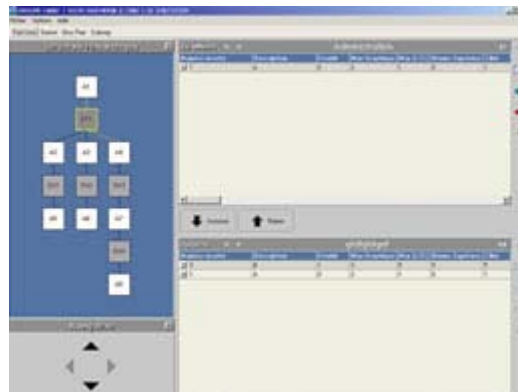
- Simplified management of complex recipes and parameter groups for equipment and products.
- Historical management of recipe versions and parameter groups.
- Multi-user system providing enhanced supervision when many people are working on the same parameter groups.
- Integration security and assignment of privileges based on the registered user.



Production Start-up Module

The GC-EXECUTION module forms the critical link between planning and the production floor. This module delivers a number of advantages:

- Create production schedules based on GC-PARAM output.
- Perform real-time monitoring of production progress through the user-friendly interface.
- Model your production start-up hierarchical structure, so that each level can approve new production requests as appropriate.



Functionalities and Supplemental Modules

In addition, the Harmonie system's architecture provides:

- Acquisition of batch data, which ensures data traceability.
- Production report generation that can be configured to your needs.

Looking for a Palletization Solution?

Let CADEC introduce you to GC-Pallet. It's a robotic palletizer solution geared to your needs.



This highly versatile cell:

- Can palletize a multitude of sizes and types of boxes, bags, containers, etc.
- Can handle up to 4 boxes at a time with independent control for each zone.
- Can adjust to the various types of products to be palletized.
- Can handle different-sized boxes.
- Handles up to 4 infeed and outfeed conveyors that can be installed according to your needs.
- Has a multifunctional hand for handling pallets, boxes, and paperboard separators, which reduces equipment complexity.
- Provides for loading the cell with cartons and pallets without stopping the equipment, which results in greater effectiveness.
- Offers pattern configuration that is simple and intuitive with «MOTOPALLET» software.
- Features user-friendly software for selecting the products to be palletized, which greatly simplifies operations.

In short, it's a simple, robust, accurate solution to improve your productivity and your competitiveness! You can find out more by contacting our sales department.

Hands-on Attitude

The Group CADEC has been active in the bakery and dough processing industry for more than 15 years now. Our involvement in this area of activity has been largely built on the past experience of our firm's founders.

CADEC's first customers in this area mandated the company to supervise and manage the installation of electrical bakery equipment. From project to project, our team of specialists became involved in different project phases, such as installing bakery and dough processing equipment. We had moved from supervising the

These achievements enabled CADEC to fully exploit the new technologies to make them human-compatible and take it place as a major reference for Rockwell Automation. Rockwell views CADEC as a **Solution Provider** for its products in the agrifood sector.

Building on our extensive experience in project implementation as well as the recognition we have earned from our manufacturers and partners, CADEC has been able to demonstrate a capacity for proposing high-quality, functional

electrical installation to being entrusted with electrical design, programming, and the commissioning of various types of equipment such as ovens, steamer, mold conveyors, and cooling spirals.

In addition to being directly involved in production equipment controls, we were mandated many times to handle production data management and acquisition for all the equipment that makes up bread or dough production lines. These initial installations enabled us to define the communication philosophies and data exchange structures that have been embodied in our **Harmonie** software suite (see the article on this topic).

solutions and for carrying them out in a professional manner (meeting deadlines). Today, CADEC stands out even more clearly above the competition because we are familiar with the processes and equipment used in this industry as well as with the available technologies.

Marco Turcotte, PEng, MEng
Project Manager

Upcoming...

In our next issue, you'll find out about CIP washing systems for the food industry. We have developed state-of-the-art techniques to reduce consumption of water, chemicals, and power.

We will also present specific solutions from the facilities of certain customers who have achieved enhanced production while getting a short-term return on investment.

If you would like to receive additional information or would like to have your name taken off our mailing list, don't hesitate to get in touch with us at: journal@groupecadec.com

pdf version. ([Cadec_agri-food.pdf](#))



[Groupe CADEC](#) | [CADEC agroalimentaire](#) | [CADEC pharmaceutique](#) | [CONTACT](#)