

STRATEGIC PROVIDER SOLUTIONS FORUM:



Groupe Cadec Inc.

546 CHEMIN DU PARC INDUSTRIEL ■ BROMPTONVILLE, QUEBEC JOB 1H0 ■ CANADA

PHONE: 819-846-6009 ■ FAX: 819-846-6629

Rockwell Software Strategic Provider members are Original Equipment Manufacturers (OEMs), Value Added Resellers (VARs), and Allen-Bradley System Integrators (ABSIs) that resell Rockwell Software products by incorporating them into customer solutions. The Strategic Provider Solutions Forum outlines key Strategic Provider applications to share solutions with those of you who might have needs similar to those described here.

This article describes how Groupe Cadec Inc. established an expandable solution integrating I/O and **RSView32** operator interface stations for the new Bedford facility at Graybec Calc.

Graybec Calc Inc., headquartered in the Montreal suburb of Boucherville, is one of the leading suppliers of lime and limestone products in eastern Canada and the northeastern United States. Graybec Calc has strategically located plants in Joliette, Marbleton, and Bedford, Quebec. In addition to bulk quicklime, Graybec Calc produces bagged and bulk hydrated lime, as well as limestone aggregates for construction and pulverized limestone.

At the new Bedford facility, Graybec Calc undertook a CA \$20 million project involving construction of a new lime kiln. Graybec Calc's goal was to install an integrated solution from I/O to operator stations, while keeping the application open for future expansion.

Integrating with Expansion in Mind

Graybec commissioned Groupe Cadec Inc., based in Bromptonville, Quebec, to manage the control and electrical engineering of their solution. The Cadec engineering team produced a system composed of three Allen Bradley PLC-5/40E™ processors, five motor control centers (MCC), a DeviceNet™ network, and an **RSView32™** supervisory and control system.

Cadec linked Graybec Calc's over 100 starters to the three processors via DeviceNet networks. This simple yet powerful and flexible link helped the Cadec panel team reduce cabinet



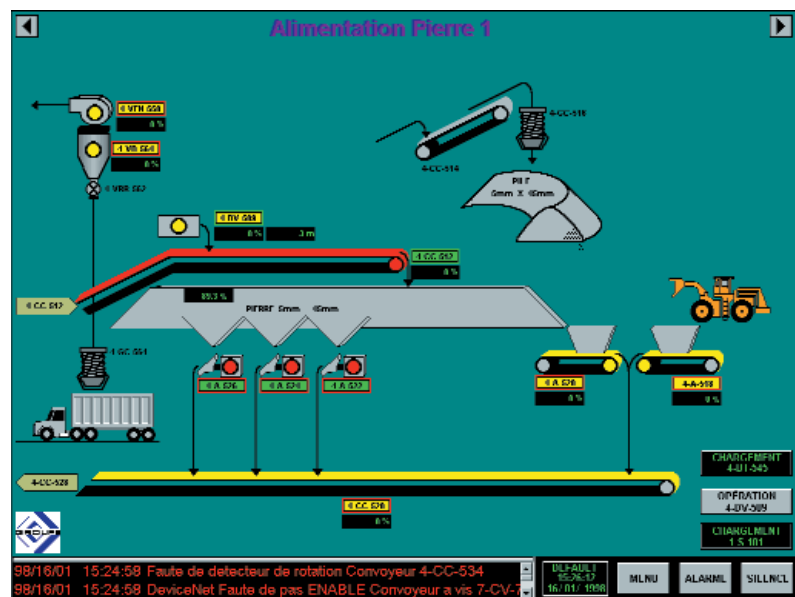
complexity. DeviceNet not only reduced wiring time and costs, but also provided important motor status information for the startup phase. The DeviceNet network makes current

maintenance and troubleshooting easier, thus reducing costly downtime.

The three processors and the **RSView32** station communicate together using an Ethernet™ network, providing the speed needed to collect the production data and monitor the alarms of the entire plant.

Re-Using RSView32 Objects and Templates

The new system had to monitor numerous I/Os and alarms, so integrating **RSView32** with the programming tools greatly reduced



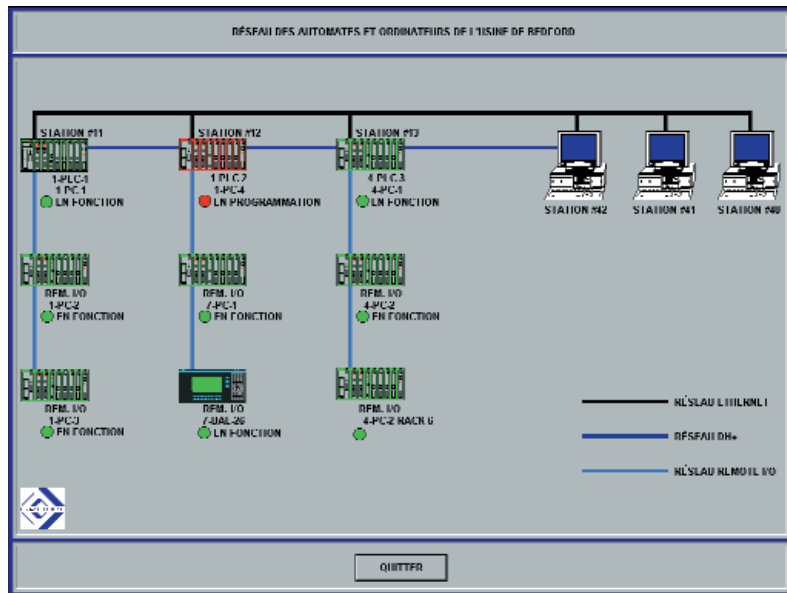
Cadec designed general operation displays for Graybec Calc.

development time. In addition, the option of building reusable **RSView32** objects and templates helped Cadec's programming team to produce a standard library of templates and pre-animated objects. As a result, the development process moved quickly. **RSView32** is especially effective in applications with numerous motors and PID loops that require the same presentation of information and controls. The result was an intuitive, uniform supervisory and control operator station.

RSView32 reusable, pre-animated objects and templates helps in keeping the same development standards, and gives the operators the same "look and feel" across applications. It also makes the growth of the present application and the addition of other operator stations fast and easy.

For More Information

Groupe Cadec specializes in automated equipment and robotics systems, data acquisition systems, distributed control systems (DCS), production tracking systems, industrial networks, and engineering services. The staff contains Microsoft® Certified



This status window helps pinpoint potential networking problems.

Professionals on Windows™ 95, Windows NT™, networking, and Microsoft Visual Basic®. ISO 9001 approved, Groupe Cadec is also a Rockwell Software Strategic Provider Advanced Value Added Reseller (VAR), a Lotus® Business Partner, and a member of the Canadian Standards Association (CSA).

For more information about Groupe Cadec Inc., contact the Rockwell Software Channel Marketing Group in West Allis, Wisconsin, at 414-321-8000. **S**



Reach us now at www.rockwellautomation.com

Wherever you need us, Rockwell Automation brings together leading brands in industrial automation including Allen-Bradley controls, Reliance Electric power transmission products, Dodge mechanical power transmission components, and Rockwell Software. Rockwell Automation's unique, flexible approach to helping customers achieve a competitive advantage is supported by thousands of authorized partners, distributors and system integrators around the world.

Americas Headquarters, 1201 South Second Street, Milwaukee, WI 53204, USA, Tel: (1) 414 382-2000, Fax: (1) 414 382-4444
European Headquarters SA/NV, avenue Herrmann Debroux, 46, 1160 Brussels, Belgium, Tel: (32) 2 663 06 00, Fax: (32) 2 663 06 40
Asia Pacific Headquarters, 27/F Citicorp Centre, 18 Whitfield Road, Causeway Bay, Hong Kong, Tel: (852) 2887 4788, Fax: (852) 2508 1846

